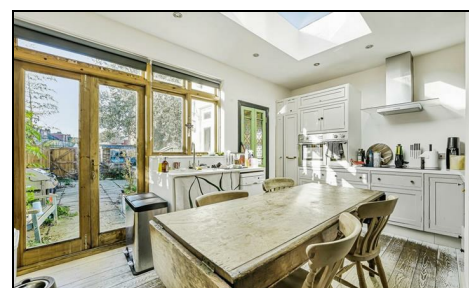
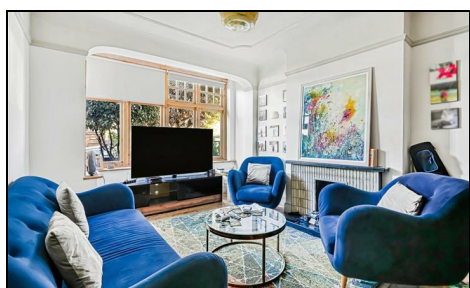


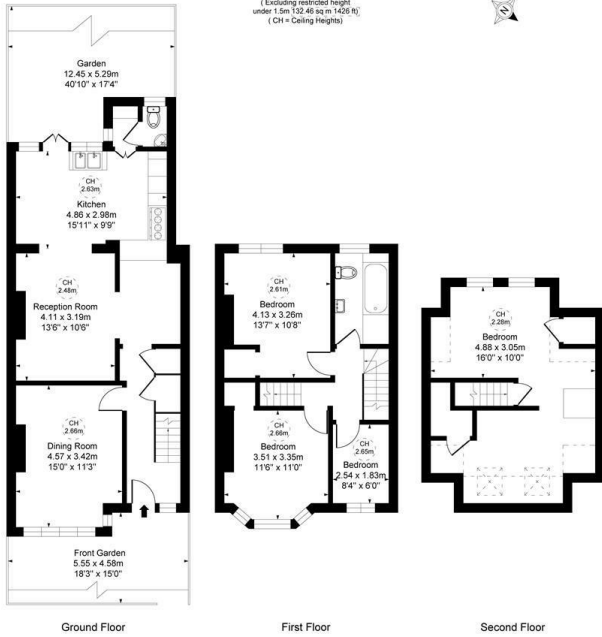
**Lower Downs Road
Raynes Park, SW20 8QQ**

£950,000 Freehold

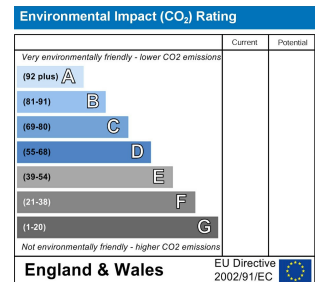
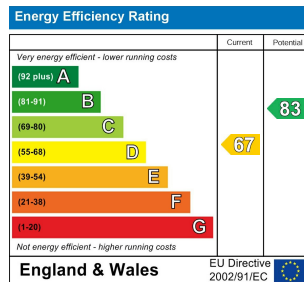


This spacious 1,509 sqft, FOUR BEDROOM fully extended, 1930's terrace house has a 40'ft West facing rear garden and no onward chain. Perfectly located for access to Raynes Park, Wimbledon Chase and Wimbledon.

Lower Downs Road,
Raynes Park, London, SW20
Approximate Gross Internal Area
140.15 sq m / 1509 sq ft
(Excluding restricted height
under 1.5m/102.46 sq m/1450 sq ft)
(CH = Ceiling Heights)



- Four Bedroom - Fully Extended - 1930's Terrace House
- 1,509 sqft - 140.15 sqm
- 40'ft West Facing Garden
- Easy Access To Raynes Park Station And Wimbledon Chase
- Easy Access To Wimbledon Station And High Street
- Extended Kitchen
- Close To A Selection Of Well-Regarded Schools
- No Onward Chain
- EPC - D
- Council Tax Band - E



For Free Mortgage Quote and Best Mortgage Rates, call Ellisons Mortgage Advisor on 0208 944 9595



Although these particulars are believed to be correct, their accuracy is not guaranteed and they do not form part of any contract.

Celebrating 30 years of successful Sales and Lettings in Merton

